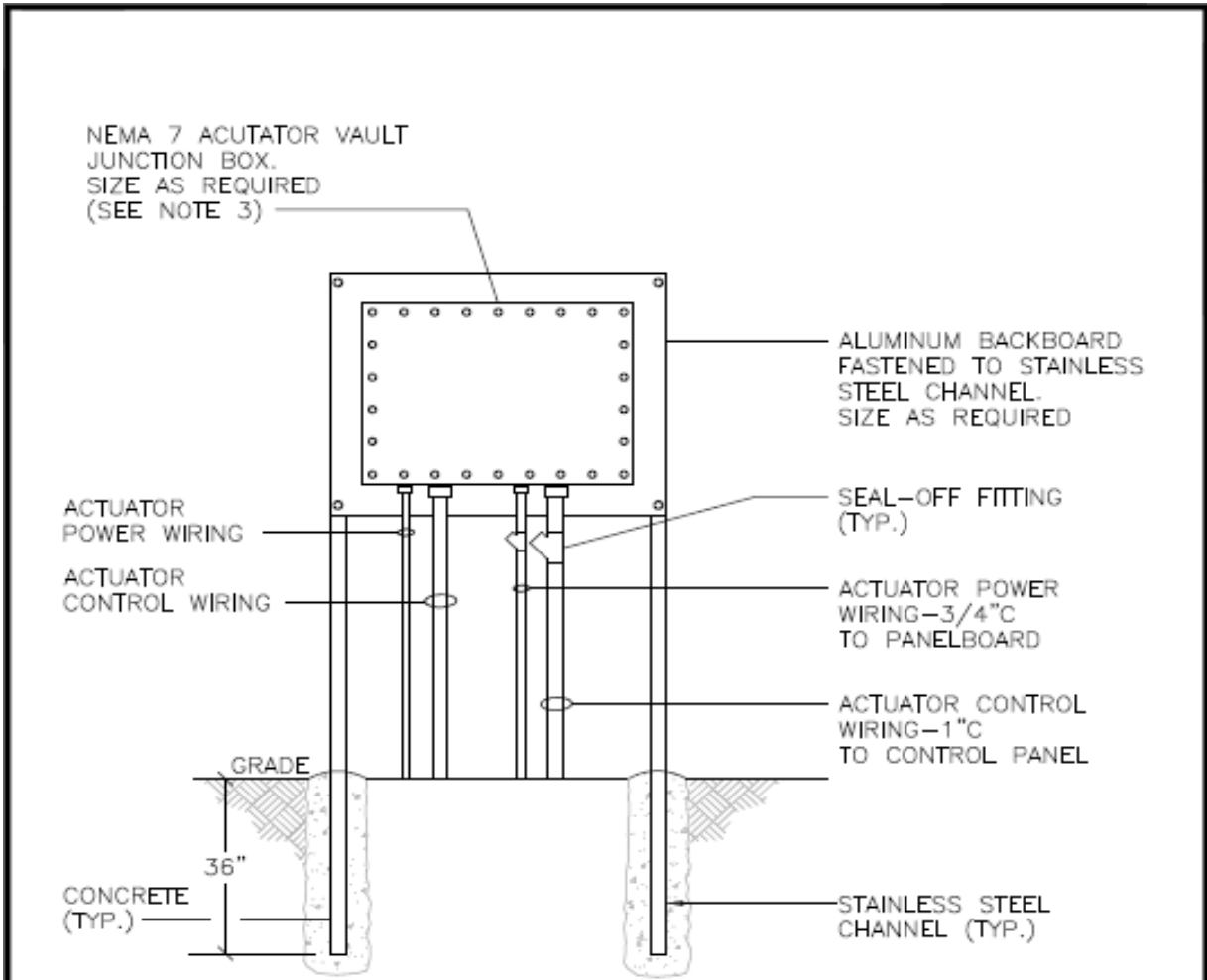


## Actuator Vault Electrical Blackboard Detail



**NOTES:**

1. THE INSTRUMENT VAULT AND VALVE VAULT ARE CLASSIFIED AS A CLASS 1, DIVISION 2, GROUP D AREA IN ACCORDANCE WITH NFPA 820. THE INSTALLATION OF ALL ELECTRICAL EQUIPMENT AND CONDUIT SHALL BE PERFORMED IN ACCORDANCE WITH THIS CLASSIFICATION.
2. ALL CONDUIT PENETRATIONS THROUGH CONCRETE STRUCTURES SHALL BE INSTALLED THROUGH SLEEVED PENETRATIONS WITH MODULAR SEALS AND 316 STAINLESS STEEL HARDWARE.
3. PROVIDE A BARRIER BETWEEN POWER AND CONTROL WIRING.

NOT TO SCALE

	STANDARD DESIGN DETAIL	DRAWING NO. 704
	ACTUATOR VAULT ELECTRICAL BACKBOARD DETAIL	SHEET 1 OF 1 DATE 12/2022