



# Coupon Data Collection Form (All pipe materials)

## Section 1: General Site Data

---

1. Date

2a. Facility ID / Asset ID

2b. Line Number

3a. Pipe Diameter

3b. Pipe Material

3c. Other:

4a. Pipe Classification

4b. Nominal Thickness (in)

5. Inspection Reason (check one)

Abandonment

Pipe Rehab

Temporarily Out-of-Service

6. Coupon properly marked? (see Section 3)

Yes

No

7a. Coupon to be collected? If Yes, complete 7b

Yes

No

7b. Coupon Tag (YYMMDD\_AssetID\_UniqueCoupon#)

---

## Section 2: Coupon Collection

---

If coupon is to be collected:

1. Ensure coupon is properly marked.
2. Wrap sample in plastic.
3. Place waterproof tag with tag name (see item 7).
4. Place in safe, easily accessible place and notify Project Manager for collection.

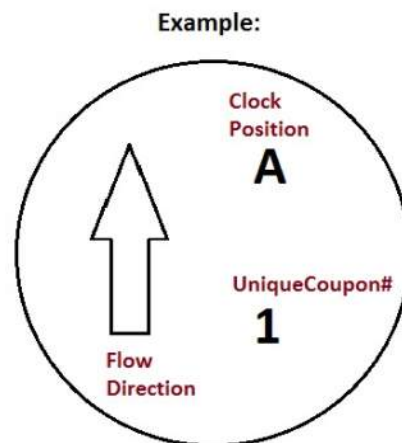
---

## Section 3: Coupon Marking

---

Prior to taking photos and measurements:

1. Note flow direction
2. Note clock position A, B, C, or D (see number 10)
3. Note UniqueCoupon#



---

## Section 4: Coupon Data

---

8. GPS Coordinates of coupon location:

Easting (X):

Northing (Y):

Elevation (Z):

9. Brief description of coupon location (nearest intersection, stationing from record drawings, etc.):

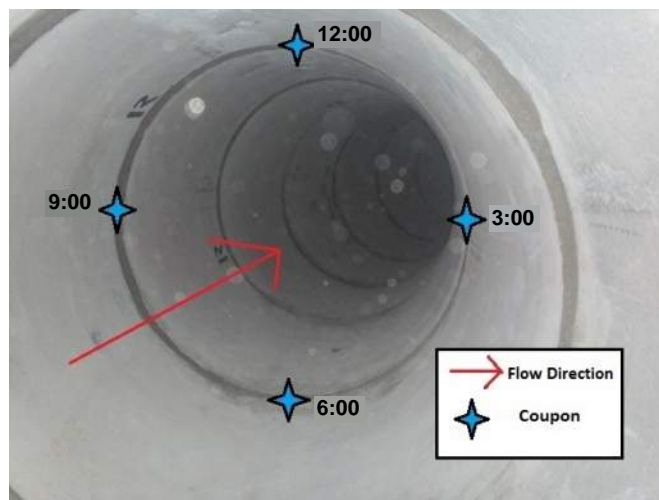
10. Coupon clock position

12:00

3:00

6:00

9:00



11. Coupon Photos **(required)**

With proper markings:

Exterior coupon

Interior coupon

Close-Up edges of coupon

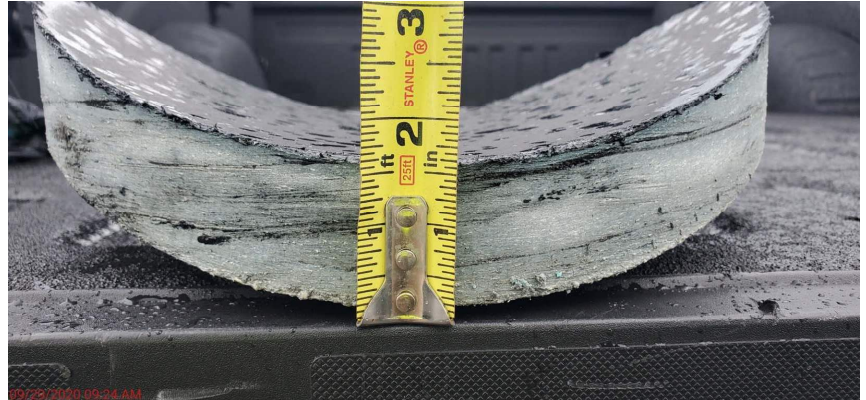
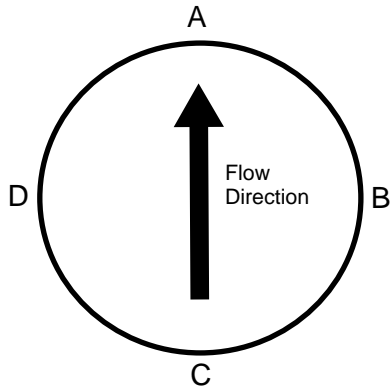
**NOTE:** Attach all photos to this data collection form.

---

## Section 5: Coupon Thickness

---

**Ductile Iron / Cast Iron / AC / PVC / HDPE:** Pipe coupon thickness documentation should include the thickness of the material in multiple locations on the coupon making sure to note the maximum and minimum thickness observed.



Location A    Thickness (in)

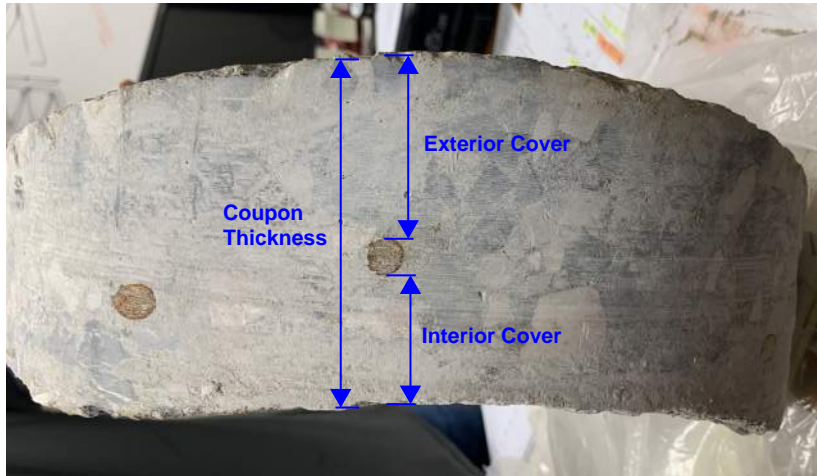
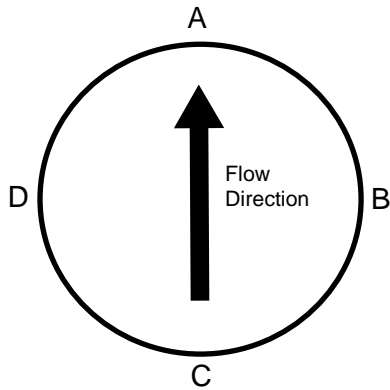
Location B    Thickness (in)

Location C    Thickness (in)

Location D    Thickness (in)

Additional Notes

**Reinforced Concrete Pressure Pipe (RCPP):** Pipe coupon thickness dimensions should include the overall thickness, the concrete cover over the steel reinforcement from the interior (Int. cover) and the exterior (Ext. Cover) on each of the identified points of the coupon.

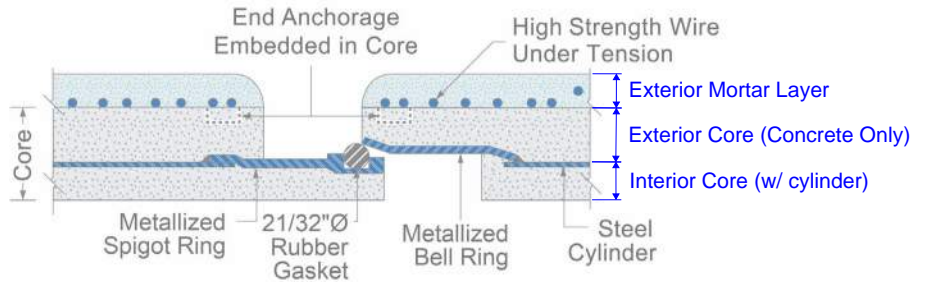


Location	Thickness (in)	Ext. Cover (in)	Int. Cover (in)
Location A	Thickness (in)	Ext. Cover (in)	Int. Cover (in)
Location B	Thickness (in)	Ext. Cover (in)	Int. Cover (in)
Location C	Thickness (in)	Ext. Cover (in)	Int. Cover (in)
Location D	Thickness (in)	Ext. Cover (in)	Int. Cover (in)

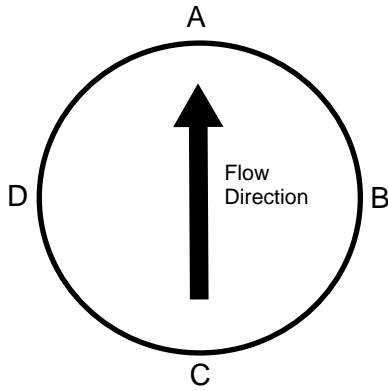
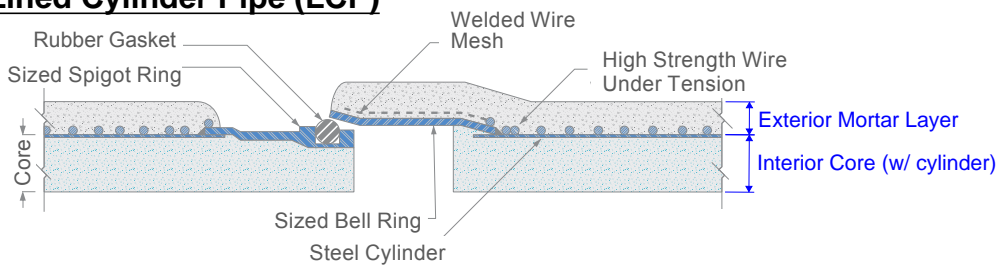
Additional Notes

**Prestressed Concrete Cylinder Pipe (PCCP):** Pipe coupon thickness documentation should include the thickness of each layer of composite pipe consisting of the interior concrete core (w/ steel cylinder), the exterior concrete core (ECP Only), and exterior mortar layer. Where there is no cementitious layer between the cylinder and wire, record as "N/A" for Exterior Core.

**Embedded Cylinder Pipe (ECP)**



**Lined Cylinder Pipe (LCP)**



Location	Int. Core (in)	Ext. Core (in)	Ext. Mortar (in)
Location A	Int. Core (in)	Ext. Core (in)	Ext. Mortar (in)
Location B	Int. Core (in)	Ext. Core (in)	Ext. Mortar (in)
Location C	Int. Core (in)	Ext. Core (in)	Ext. Mortar (in)
Location D	Int. Core (in)	Ext. Core (in)	Ext. Mortar (in)

Additional Notes

**NOTE:** The exterior concrete and mortar materials are not retained in the pipe coupon. Direct measurements of exterior materials are to be captured during preparation of PCCP prior to tapping the pipe.