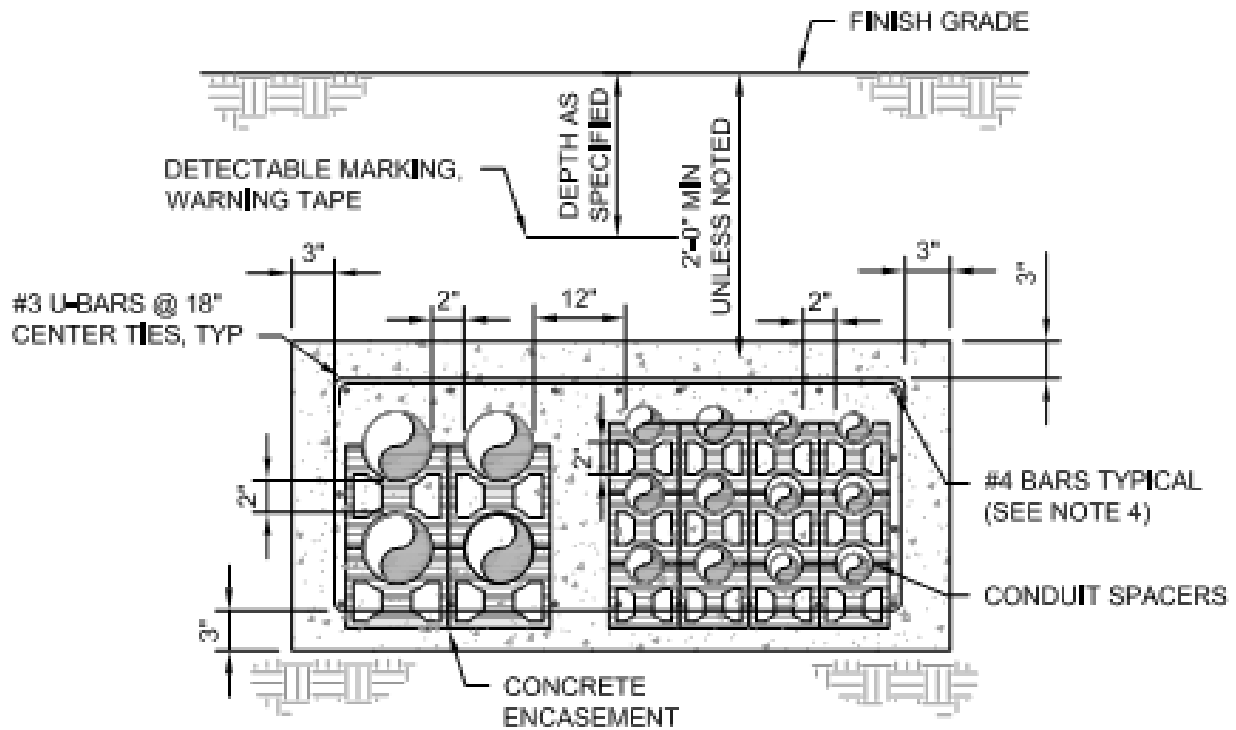


## Ductbank Directions



### NOTES FOR DUCT BANKS

1. CONDUIT SPACING SHALL BE AS REQUIRED BY NEC. MINIMUM CONCRETE THICKNESS BETWEEN CONDUITS SHALL BE 2" MIN. CONCRETE THICKNESS BETWEEN POWER AND INSTRUMENTATION CONDUITS SHALL BE 7 1/2".
2. DUCT BANKS SHALL BE REINFORCED AT ALL LOCATIONS, BOTH HORIZONTAL AND VERTICAL INSTALLATIONS.
3. SEE SPECIFICATIONS FOR UNDERGROUND WARNING TAPE.
4. QUANTITY OF BARS EQUALS THE QUANTITY OF CONDUITS PLUS ONE, PER FACE MINIMUM.
5. CONCRETE SHALL BE RED-DYED.

### TYPICAL REINFORCED CONCRETE ENCASED

#### DUCTBANK CONSTRUCTION

## DETAIL

