

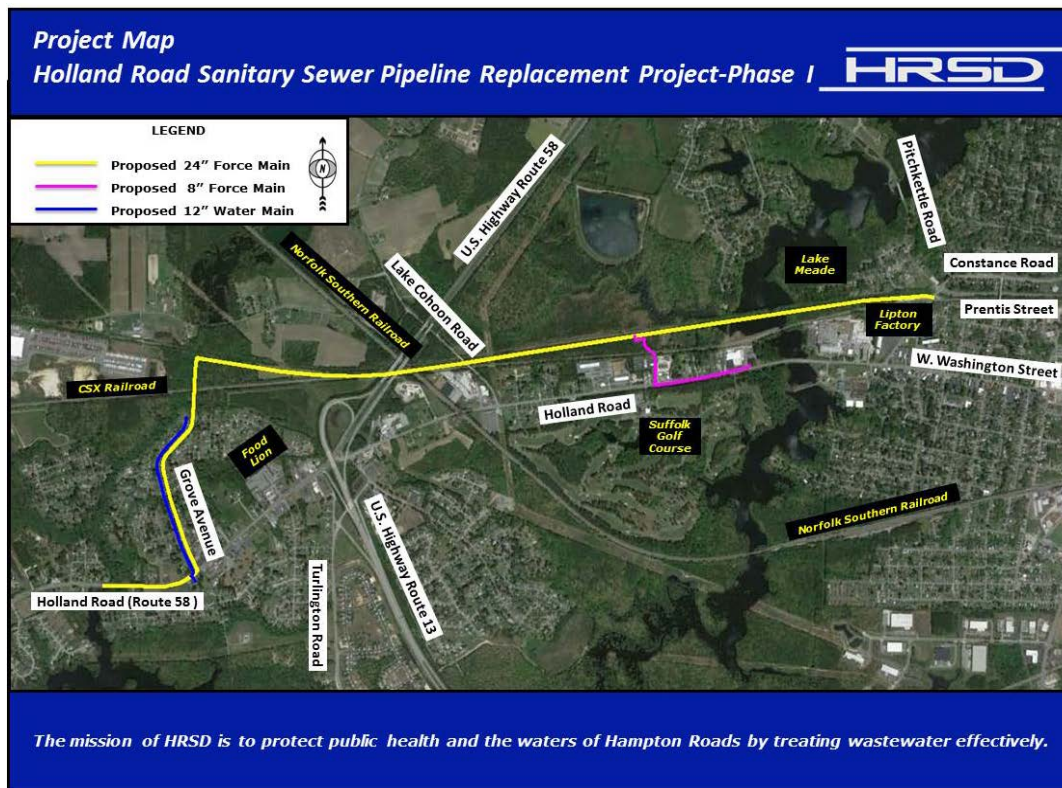
**Notice to Neighbors
March 3, 2016**

Holland Road Sanitary Sewer Pipeline Replacement Project - Phase I

In cooperation with the City of Suffolk, HRSD, your regional wastewater treatment utility, is planning to rehabilitate sanitary sewers located in your neighborhood as part of a larger, federally-mandated program to reduce the likelihood of sewage overflows during rainstorms. The project also will improve the system’s performance and ensure continued, reliable sewer service in the future. The answers to some Frequently Asked Questions (FAQs) are provided on the back of this notice.

Project Overview

This effort, to be accomplished in two phases, will replace a pipeline built in the 1970s that is nearing the end of its useful life. The project will benefit area businesses and residents by providing updated infrastructure that will improve the operation of the sanitary sewer system and reduce the likelihood of sewage overflows. During Phase I (Phase II has already begun and is nearing completion), approximately 18,200 linear feet of 24-inch diameter sanitary sewer pipeline will be installed along Holland Road, through a portion of the Oak Ridge Subdivision, and along a former railroad corridor currently owned by the City of Suffolk. HRSD is also working with the City of Suffolk to replace approximately 3,300 linear feet of water main piping in the Oak Ridge Subdivision as a part of this project.



Project Schedule

Construction:
March 2016 –
Spring 2018

Restoration:
Immediately
following
construction

Roads Affected:
Delaney Drive,
Holland, Grove,
and Pitchkettle
Roads

Thank you for your support of this effort to help achieve HRSD’s vision: **Future generations will inherit clean waterways and be able to keep them clean.**

PO Box 5911, Virginia Beach, VA 23471-0911 • 757.460.7000

Frequently Asked Questions

Holland Road Sanitary Sewer Pipeline Replacement-Phase I

Why is this project necessary?

A. This project is a necessary part of a larger, federally-mandated program to reduce the likelihood of sewage overflows during rainstorms. This project will provide updated infrastructure that will help ensure HRSD's ability to protect public health and the environment for decades to come.

Will the project affect the flow of traffic in the neighborhood?

A. HRSD and the City of Suffolk have worked closely to develop a plan to minimize traffic disruptions. In most cases, a single lane of traffic will be maintained. Appropriate signage, traffic control devices and flagging operations will be provided to guide motorists.

Will access to properties along the route be maintained during construction?

A. Access to individual residences may be affected temporarily as construction proceeds across a driveway. The contractor will coordinate access issues directly with the affected property owner. Trash and mail services will not be affected. If necessary, the contractor will move trash containers from within a work zone to an area accessible for pickup, and will be responsible for returning them to each residence.

What are the general working hours for the project?

A. Work typically will take place Monday through Friday during daylight hours (7 a.m. - 4 p.m.). However, there may be times when extended hours, work at night or weekend work may be necessary.

Will construction affect the existing pavement?

A. Upon completion of the pipeline installation, the existing pavement will be removed and new pavement will be installed.

What sort of noise and dust impacts are anticipated?

A. As with any construction project, routine noise generated by the operation of heavy equipment is anticipated. During construction, the contractor will be required to keep the roadways free of dirt and other debris, and to apply water to the site as needed to minimize dust.

Will and trees be removed during this project?

A. Yes. A large portion of the pipeline takes place in the wooded area adjacent to and North of the CSX Railroad line. HRSD will clear and maintain a 30-foot easement along this path.

What is the cost of the project?

A. The estimated cost for the project is \$10.3 million, and is financed by the wastewater treatment fees paid by HRSD customers. The City of Suffolk will fund the replacement of water mains performed as part of this project.

How can I receive regular project updates?

A. Regular project updates are posted on the HRSD website at www.hrsd.com/constructionstatus.